

## April 2012 Construction Photos



Subcontractor Construction Specialties erecting battery room inside the switchgear room.



Metal guardrail beam installed along the afterbay deck of Pumping Plant.



## April 2012 Construction Photos



Subcontractor All Commercial Fence erecting fence around Switchyard.



Fitting up the flexible conduit to the butterfly actuators using the removable handrail.



## April 2012 Construction Photos



Subcontractor Harreld's Hi-Voltage terminating the medium voltage cables in the 69 kV transformers.

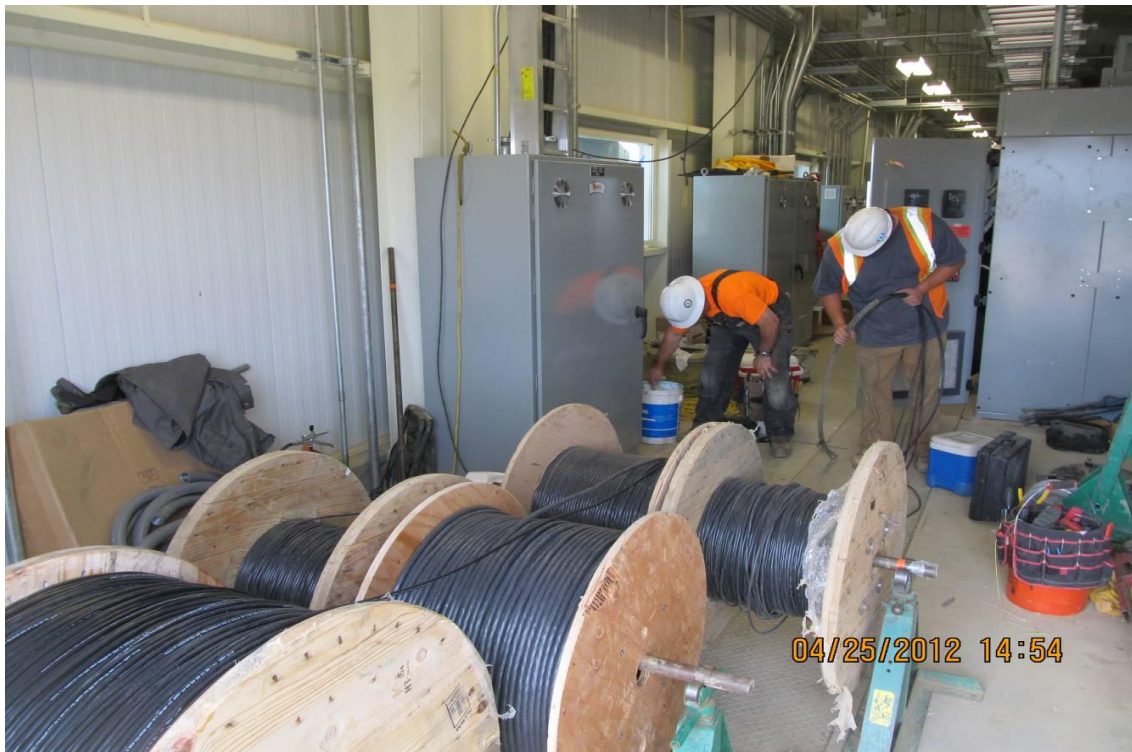


Inside switchgear room of the non-segregated bus and conduit running from unit UCA to transformers.

# April 2012 Construction Photos



Forebay filled with water to elevation 242.5, looking from Fish Screen to Pumping Plant.



Subcontractor Central Sierra Electric pulling conductors inside control building.



## April 2012 Construction Photos



Forebay filled with water, looking from Pumping Plant upstream at backside of Fish Screen.



Subcontractor FD Thomas coating top of motor sole plate.